

TRUCK WORLD

ABOUT TRUCK WORLD

Truck World, located in Conneaut, Ohio, is a natural gas pipeline system that was installed in 2020. It consists of 53.04' of 4" coated steel transmission main and 1664.18' of 4" HDPE plastic distribution main. It has 2- 3" plastic services with a total length of 3,395.42'. The pipeline is completely buried with an M&R setting and is fed from a single supply source at RH Energy Transfer that supplies gas at the Riseberg Pipeline POD.

WHAT ARE THE SIGNS OF A NATURAL GAS PIPELINE LEAK?

- Blowing or hissing sound
- Dust blowing from a hole in the ground
- Continuous bubbling in wet or flooded areas
- Gaseous or hydrocarbon odor
- Dead or discolored vegetation in a green area
- Flames, if a leak has ignited

WHAT SHOULD I DO IF I SUSPECT A PIPELINE LEAK?

Your personal safety should be your first concern:

- Evacuate the area and prevent anyone from entering
- Abandon any equipment being used near the area
- Avoid any open flames
- Avoid introducing any sources of ignition to the area (such as cell phones, pagers, 2-way radios)
- Do not start/turn off motor vehicles/ electrical equipment
- Call 911 or contact local fire or law enforcement
- Notify the pipeline company
- Do not attempt to extinguish a natural gas fire
- Do not attempt to operate any pipeline valves

PIPELINE SAFETY

System failures occur infrequently along the nation's network of interstate natural gas pipeline facilities, and many of these are caused by damage from others digging near the pipeline. We watch for unauthorized digging, but we request your help to notify us.

ALWAYS CALL 811 BEFORE YOU DIG!

PRODUCTS TRANSPORTED

Product: Natural Gas

Leak Type: Gas

Vapors: Lighter than air and will generally rise and dissipate. May gather in a confined space and travel to a source of ignition.

Health Hazards: Will be easily ignited by heat, sparks or flames and will form explosive mixtures with air. Vapors may cause dizziness or asphyxiation without warning and may be toxic if inhaled at high concentrations. Contact with gas or liquefied gas may cause burns, severe injury and/or frostbite.

EMERGENCY CONTACT: 1-877-351-0486

PRODUCTS/ DOT GUIDEBOOK ID#/ GUIDE#:		
Natural Gas	1971	115

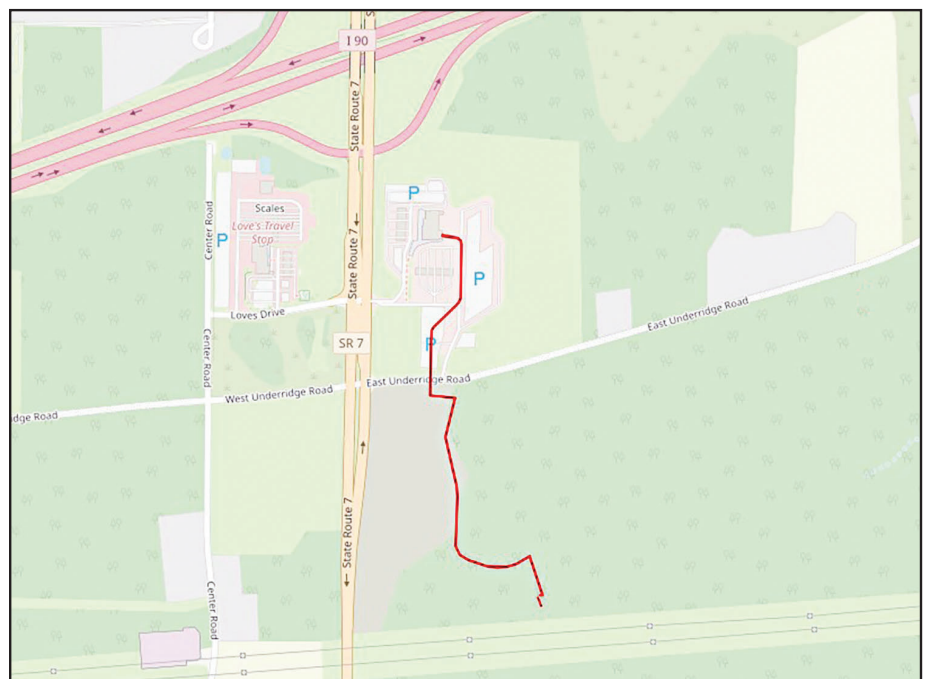
OHIO COUNTIES OF OPERATION:

Ashtabula

Changes may occur. Contact the operator to discuss their pipeline systems and areas of operation.

EMERGENCY RESPONSE PLANS

An Emergency Response Plan is developed for each pipeline facility to contain, control and mitigate the various types of emergency conditions/ situations that could occur at one of our facilities. For more information regarding World Truck Pipelines emergency response plans and procedures, contact us at 614-482-8080.



Base map courtesy of openstreetmap.org